

ELIRE Labs - Managing Partner

- Industries: Infrastructure, Energy, Maritime Transport, Aviation, Ports
- Remote working – 20 hours per month
- Services for equity arrangement + consulting fees
- Start and onboard immediately
- Evolves to a full-time paid role upon converting larger projects

As a group, ELIRE has accelerated rapidly over the last few months to position our ventures and world-first solutions, which are critical to accelerating the ecosystem's shift towards adopting new technologies.

Company Description

ELIRE Labs, part of ELIRE Group, is our dedicated innovation centre, where breakthrough ideas take shape and new ventures are born. Guided by a belief that innovation must be commercially viable, scalable and impactful, ELIRE Labs is at the forefront of technology solutions for infrastructure, clean energy and transport. From ideation to implementation, our Labs transform concepts into real-world solutions that drive decarbonisation and net zero goals.

Sectors we Serve - We collaborate with industry leaders to drive innovation across:

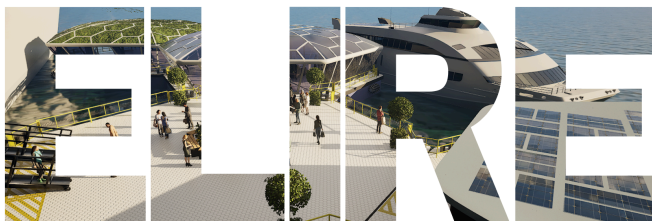
- Maritime & Ocean
- Transport, Freight and Smart City
- Energy & Power
- Aerospace & Defence

Your Impact

As Managing Director of ELIRE Labs, you will lead our innovation engine, bridging ideation, technology development, commercialisation, and strategic partnerships across clean energy, transportation, infrastructure, and maritime domains.

The MD will drive our mission to translate breakthrough concepts into scalable, commercially viable solutions, overseeing both high-level leadership and operational execution.

You will report to the ELIRE Group executive leadership and be responsible for growing ELIRE Labs into a globally recognised innovation hub.



Key Responsibilities

Strategic Leadership & Vision

- Define and evolve ELIRE Labs' long-term vision, goals, and roadmap in alignment with ELIRE Group's strategy.
- Lead the formulation of innovation themes, priorities, and investment focus (e.g. clean energy, maritime solutions, infrastructure, transport).
- Assess emerging technology trends, competitive landscape, and regulatory dynamics in relevant sectors (energy, transport, infrastructure) to guide Labs' direction.

Program & Portfolio Management

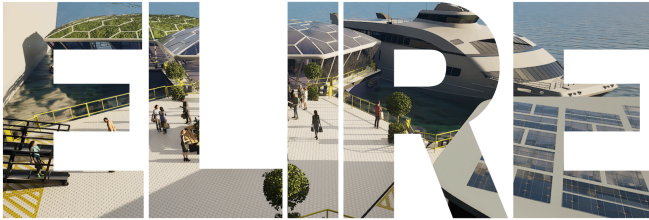
- Oversee the pipeline of ideation, proof-of-concept, prototyping, scaling, and spin-out ventures within ELIRE Labs.
- Ensure rigorous stage-gates, risk management, resource allocation, milestone tracking, and value creation across projects.
- Foster cross-project synergies, reuse of IP, economies of scale, and knowledge transfer across Labs' initiatives.

Commercialisation & Business Development

- Lead commercialisation efforts: work with internal and external stakeholders to move technologies toward market adoption, licensing, partnerships, or venture spin-outs.
- Cultivate and manage strategic partnerships with corporates, government agencies, research institutions, universities, investors, and innovation ecosystems.
- Negotiate joint development agreements, licensing contracts, collaborations, and investment deals.
- Drive go-to-market strategies for new products, solutions, or ventures emerging from the lab.

Consulting, Advisory & Ecosystem Engagement

- Serve as the public face of ELIRE Labs in industry forums, conferences, and with key stakeholders.
- Provide consulting and advisory support to corporate partners or external clients seeking innovation, decarbonization, or modernisation solutions.
- Engage with policy makers, standard bodies, and industry consortia to shape enabling environments.



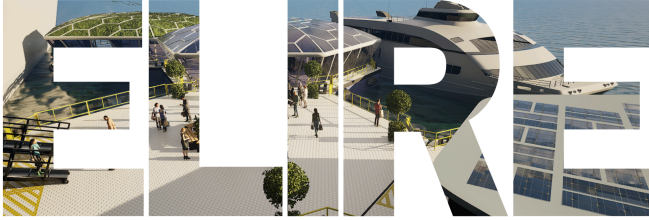
Operational Leadership & Team Management

- Build, lead, and mentor a multidisciplinary team (engineering, design, R&D, commercialisation, and project managers).
- Establish processes, governance, budgets, metrics, and reporting to track Lab performance, ROI, and impact.
- Liaise closely with ELIRE Group functional leads (e.g. legal, finance, marketing) to ensure alignment, compliance, and support.
- Drive a culture of innovation, accountability, agility, and continuous learning within the Labs structure.

Who You Are

Required Experience & Skills

- Extensive leadership experience (10+ years), ideally including roles in consulting, innovation management, corporate venturing, or R&D commercialisation.
- Demonstrable track record in bringing together multi-party collaborations, forging partnerships, and executing innovation programs.
- Substantive domain experience in one or more of: clean energy, maritime & ocean systems, transport/freight, infrastructure, or decarbonization technologies.
- Experience managing the full technology lifecycle: ideation, prototyping, piloting, scaling, commercialisation, and spin-out ventures.
- Strong business acumen: able to understand markets, revenue models, cost structures, risk, and investment decisions.
- Excellent stakeholder management, negotiating skills, and ability to represent the organisation externally.
- Ability to attract funding, investments, grants, or institutional support for lab and venture activities.
- Strong leadership, team-building, and talent development capability.
- Highly strategic thinker who can also engage in hands-on execution, decision-making, and problem-solving in complex technical settings.



Desired Attributes

- Visionary, entrepreneurial, and intellectually curious — comfortable navigating ambiguity, forging new paths, and taking calculated risks.
- Strong communicator, persuasive storyteller, capable of linking technical detail to commercial outcomes.
- Collaborative, inclusive, and able to bridge technical, business, and operational functions.
- Resilient, adaptive, and able to thrive in fast-moving, innovation-driven environments.
- Global mindset, able to engage across geographies, cultures, and regulatory regimes.

Contact and apply with your resume, portfolio, LinkedIn profile and a short description of your interest and experience via email using the subject - *Labs MP* + '*your name*' to Luke Jenkinson, Group CEO, luke@eliregroup.com